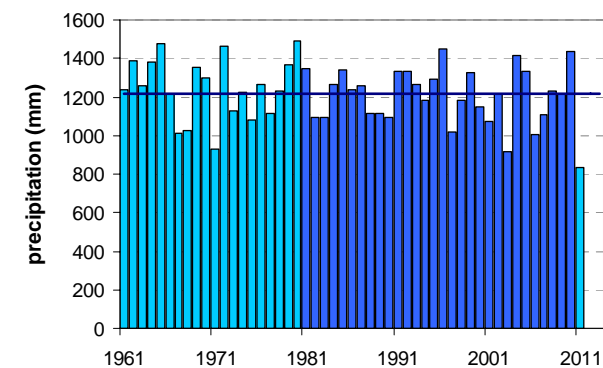
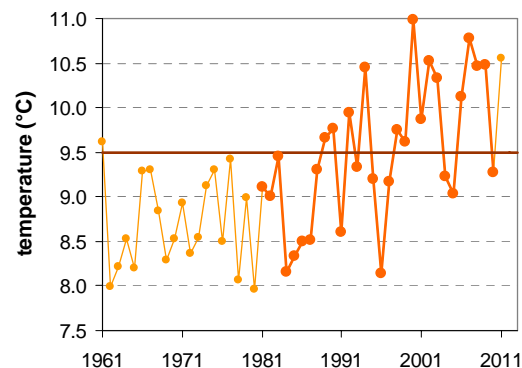


SEVNO

Latitude: 45° 59'

Longitude: 14° 56'

Elevation a. s. l.: 545 m



	JAN	FEB	MAR	APR	MAY	JUN	JUL	AUG	SEP	OCT	NOV	DEC	YEAR
mean monthly temperature (°C)*	-0.3	1.1	5.0	9.2	14.0	16.9	19.2	18.9	14.7	10.1	4.6	0.6	9.5
mean daily maximum for a month (°C)*	2.8	5.1	9.5	14.0	19.1	22.0	24.6	24.1	19.5	14.3	8.0	3.5	13.9
mean daily minimum for a month (°C)*	-2.8	-1.7	1.7	5.6	10.1	13.0	14.9	14.8	11.1	7.2	2.2	-1.7	6.2
absolute monthly maximum (°C)	16.5	19.3	23.2	26.1	30.0	33.4	34.5	36.5	28.4	24.2	20.2	17.2	36.5
absolute monthly minimum (°C)	-18.9	-16.3	-12.7	-4.5	-0.7	2.9	5.9	5.0	2.5	-5.4	-11.1	-15.5	-18.9
number of days with max. temperature < 0 °C	10	5	1	0	0	0	0	0	0	0	2	7	25
number of days with min. temperature < 0 °C	21	18	12	2	0	0	0	0	0	1	10	21	84
number of days with max. temperature > 25 °C	0	0	0	0	2	8	14	13	2	0	0	0	39
number of days with max. temperature > 30 °C	0	0	0	0	0	1	2	2	0	0	0	0	4
bright sunshine duration (in hours)*	—	—	—	—	—	—	—	—	—	—	—	—	—
mean monthly relative humidity at 7 a.m. (%)	84	80	78	77	79	81	81	82	87	89	87	86	83
mean monthly relative humidity at 2 p.m. (%)	74	63	58	56	57	60	57	58	64	69	75	79	64
mean monthly relative humidity at 9 p.m. (%)	81	74	69	68	71	74	72	74	80	84	84	84	76
mean cloud amount at 7 a.m. (in tenths)	6.8	6.1	6.4	6.3	5.5	5.3	4.3	4.4	5.4	6.5	7.1	7.2	5.9
mean cloud amount at 2 p.m. (in tenths)	6.6	6.2	6.7	7.2	6.7	6.4	5.6	5.4	5.9	6.4	7.2	7.2	6.5
mean cloud amount at 9 p.m. (in tenths)	5.9	5.3	5.3	5.2	4.8	5.0	3.9	3.6	4.2	5.3	6.3	6.6	5.1
number of clear days (cloudiness < 2/10)	5	6	5	4	4	4	7	9	6	5	3	3	61
number of cloudy days (cloudiness > 8/10)	14	10	11	11	8	8	5	6	8	11	14	16	121
total amount of precipitation (mm)*	55	63	80	88	105	143	114	118	122	133	110	84	1214
number of days with precipitation 0.1 mm or more	11	10	12	14	14	14	12	11	11	12	13	14	149
number of days with precipitation 1 mm or more	7	7	8	10	10	11	9	9	9	9	9	10	108
number of days with precipitation 10 mm or more	2	2	3	3	4	5	4	4	4	4	4	3	41
number of days with snow cover at 7 a.m.	13	12	7	1	0	0	0	0	0	0	4	12	48
mean snow cover depth at 7 a.m. (cm)*	7	8	3	0	0	0	0	0	0	0	2	4	2.0
maximum snow cover depth at 7 a.m. (cm)	63	67	52	18	20	0	0	0	0	17	49	44	67
mean new snow cover depth (cm)*	28	36	22	6	1	0	0	0	0	1	17	30	140

* homogenised values

Time period: 1981–2010