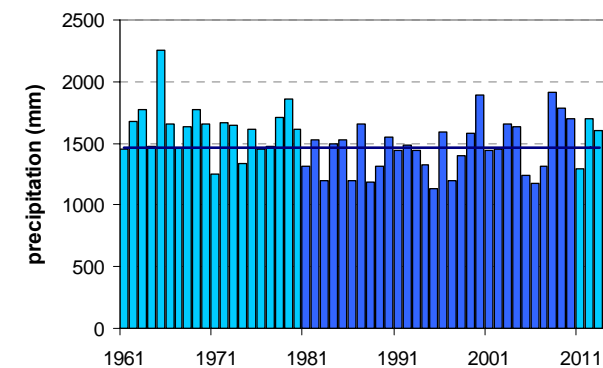
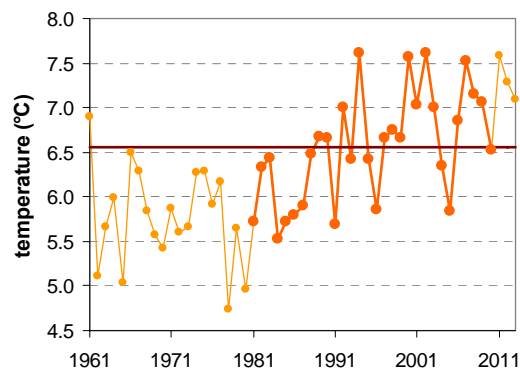


RATEČE

Latitude: 46° 30'

Longitude: 13° 43'

Elevation a. s. l.: 864 m



	JAN	FEB	MAR	APR	MAY	JUN	JUL	AUG	SEP	OCT	NOV	DEC	YEAR
mean monthly temperature (°C)*	-3.9	-2.2	1.7	5.9	11.5	15.0	17.0	16.1	11.7	7.3	1.5	-2.9	6.6
mean daily maximum for a month (°C)*	1.6	4.6	8.6	12.4	17.9	21.3	23.8	23.1	18.5	13.6	6.6	1.6	12.8
mean daily minimum for a month (°C)*	-8.0	-7.2	-3.4	0.6	5.2	8.7	10.5	10.3	6.6	2.8	-2.1	-6.5	1.5
absolute monthly maximum (°C)	14.5	17.8	21.4	24.0	29.5	31.7	36.1	34.3	28.8	24.6	19.3	13.5	36.1
absolute monthly minimum (°C)	-26.4	-22.0	-24.3	-12.9	-4.0	-1.8	1.0	-0.5	-4.4	-12.3	-19.2	-21.2	-26.4
number of days with max. temperature < 0 °C	10	5	1	0	0	0	0	0	0	0	2	10	29
number of days with min. temperature < 0 °C	29	27	25	12	2	0	0	0	1	8	20	28	152
number of days with max. temperature > 25 °C	0	0	0	0	1	7	12	10	1	0	0	0	31
number of days with max. temperature > 30 °C	0	0	0	0	0	1	2	1	0	0	0	0	3
bright sunshine duration (in hours)*	111	138	164	170	206	218	264	245	192	153	101	88	2050
mean monthly relative humidity at 7 a.m. (%)	92	92	93	94	93	91	92	95	96	95	94	93	93
mean monthly relative humidity at 2 p.m. (%)	69	56	54	53	52	52	50	52	58	62	70	76	59
mean monthly relative humidity at 9 p.m. (%)	89	84	82	81	80	81	80	85	91	92	91	91	86
mean cloud amount at 7 a.m. (in tenths)	5.2	4.9	5.8	6.0	5.4	5.3	4.4	4.9	5.7	6.1	6.3	5.7	5.5
mean cloud amount at 2 p.m. (in tenths)	5.2	4.8	5.8	6.8	6.6	6.4	5.4	5.3	5.4	5.4	5.7	5.8	5.7
mean cloud amount at 9 p.m. (in tenths)	4.8	4.5	5.1	5.5	5.6	5.6	5.0	4.6	4.7	5.0	5.6	5.5	5.1
number of clear days (cloudiness < 2/10)	8	9	5	4	4	4	5	7	6	7	6	6	71
number of cloudy days (cloudiness > 8/10)	9	7	9	11	9	8	5	5	7	10	11	11	101
total amount of precipitation (mm)*	58	57	85	107	121	141	144	151	160	164	159	111	1459
number of days with precipitation 0.1 mm or more	9	8	11	14	16	16	14	14	12	12	11	11	147
number of days with precipitation 1 mm or more	6	6	8	11	12	12	11	11	9	9	9	8	111
number of days with precipitation 10 mm or more	2	2	3	3	4	5	5	5	4	5	5	3	45
number of days with snow cover at 7 a.m.	29	25	21	7	0	0	0	0	0	1	9	25	117
mean snow cover depth at 7 a.m. (cm)*	35	41	32	6	0	0	0	0	0	0	5	20	11.6
maximum snow cover depth at 7 a.m. (cm)	124	173	144	93	40	0	0	0	0	30	103	128	173
mean new snow cover depth (cm)*	—	—	—	—	—	—	—	—	—	—	—	—	—

* homogenised values

Time period: 1981–2010