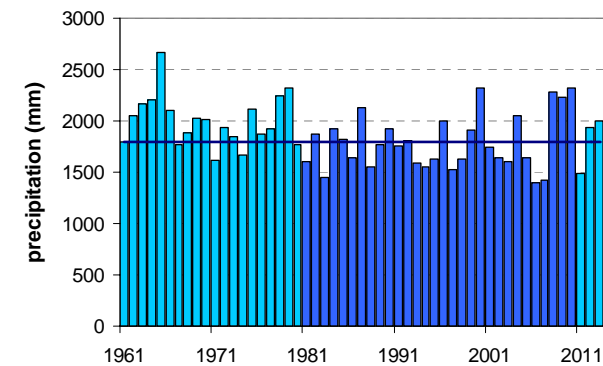
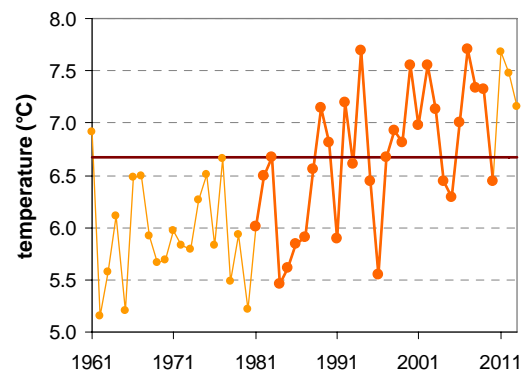
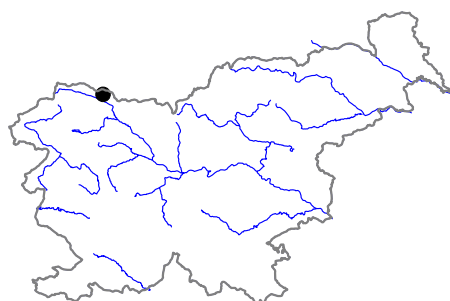


# PLANINA POD GOLICO

Latitude: 46° 28'

Longitude: 14° 03'

Elevation: 956 m a. s. l.



	JAN	FEB	MAR	APR	MAY	JUN	JUL	AUG	SEP	OCT	NOV	DEC	YEAR
mean monthly temperature (°C)*	-2.1	-1.4	1.7	5.5	10.7	13.9	15.9	15.5	11.6	7.4	2.4	-1.2	6.7
mean daily maximum for a month (°C)*	2.1	3.6	7.2	11.3	16.9	20.2	22.6	22.1	17.6	12.7	6.5	2.5	12.1
mean daily minimum for a month (°C)*	-5.4	-4.9	-1.7	1.8	6.4	9.6	11.3	11.4	8.0	4.0	-0.5	-3.9	3.0
absolute monthly maximum (°C)	15.0	17.6	20.4	22.6	28.3	30.3	33.5	31.9	27.2	22.5	18.4	14.4	33.5
absolute monthly minimum (°C)	-22.4	-20.5	-18.5	-10.0	-3.0	-0.5	1.0	1.3	-1.3	-7.6	-14.0	-18.0	-22.4
number of days with max. temperature < 0 °C	9	7	2	0	0	0	0	0	0	0	2	7	27
number of days with min. temperature < 0 °C	28	25	21	9	1	0	0	0	0	5	16	26	131
number of days with max. temperature > 25 °C	0	0	0	0	1	4	8	7	0	0	0	0	20
number of days with max. temperature > 30 °C	0	0	0	0	0	0	0	0	0	0	0	0	1
bright sunshine duration (in hours)*	—	—	—	—	—	—	—	—	—	—	—	—	—
mean monthly relative humidity at 7 a.m. (%)	81	80	83	85	85	86	86	89	90	90	86	83	85
mean monthly relative humidity at 2 p.m. (%)	62	55	54	54	53	55	52	53	58	63	65	67	58
mean monthly relative humidity at 9 p.m. (%)	79	77	78	79	79	81	81	83	87	89	84	80	81
mean cloud amount at 7 a.m. (in tenths)	5.4	5.3	5.9	6.0	5.6	5.4	4.6	4.7	5.3	5.8	6.2	5.8	5.5
mean cloud amount at 2 p.m. (in tenths)	5.6	5.3	6.2	6.7	6.6	6.2	5.6	5.4	5.7	5.9	6.2	6.0	6.0
mean cloud amount at 9 p.m. (in tenths)	5.4	5.1	5.6	5.7	5.7	5.6	5.0	5.1	5.8	6.2	6.2	5.9	5.6
number of clear days (cloudiness < 2/10)	8	7	5	4	3	4	5	6	5	6	5	6	63
number of cloudy days (cloudiness > 8/10)	10	9	11	11	9	8	5	6	8	11	12	12	111
total amount of precipitation (mm)*	75	78	112	141	155	175	162	175	187	196	189	145	1790
number of days with precipitation 0.1 mm or more	9	9	11	15	15	16	13	13	12	12	11	11	147
number of days with precipitation 1 mm or more	7	6	9	11	12	13	11	10	9	10	9	9	116
number of days with precipitation 10 mm or more	2	3	4	4	4	5	5	5	5	5	5	4	51
number of days with snow cover at 7 a.m.	23	22	19	6	0	0	0	0	0	1	6	20	97
mean snow cover depth at 7 a.m. (cm)*	28	36	30	4	0	0	0	0	0	0	4	17	9.9
maximum snow cover depth at 7 a.m. (cm)	180	181	145	87	16	0	0	0	0	31	115	155	181
mean new snow cover depth (cm)*	40	55	44	23	1	0	0	0	0	2	24	51	238

\* homogenised values

Time period: 1981–2010