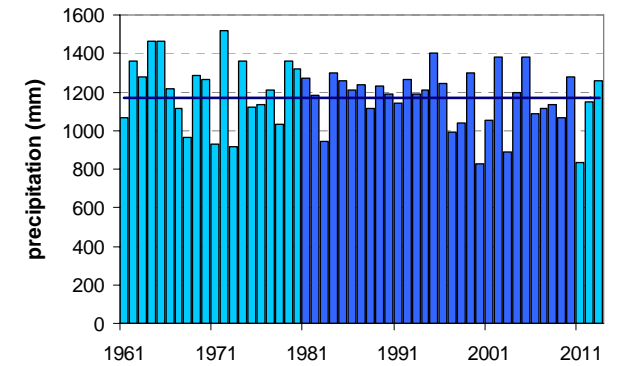
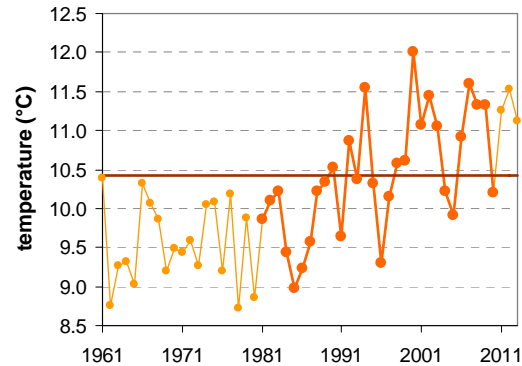
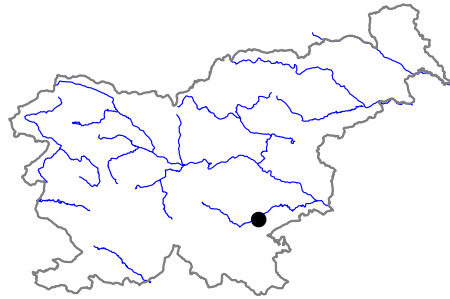


NOVO MESTO

Latitude: 45° 48'

Longitude: 15° 11'

Elevation a. s. l.: 220 m



	JAN	FEB	MAR	APR	MAY	JUN	JUL	AUG	SEP	OCT	NOV	DEC	YEAR
mean monthly temperature (°C)*	0.0	1.6	6.0	10.6	15.5	18.7	20.7	19.9	15.4	10.7	5.2	0.9	10.4
mean daily maximum for a month (°C)*	3.7	6.6	11.5	16.2	21.3	24.4	26.8	26.2	21.4	15.8	9.1	4.2	15.6
mean daily minimum for a month (°C)*	-3.2	-2.5	1.1	5.0	9.6	13.0	14.7	14.5	10.8	6.8	2.1	-1.8	5.9
absolute monthly maximum (°C)	17.1	21.5	25.8	28.4	32.6	34.8	36.6	38.4	30.2	27.1	23.5	19.5	38.4
absolute monthly minimum (°C)	-23.5	-22.5	-17.2	-5.8	-1.2	3.8	6.1	5.6	1.0	-6.6	-15.1	-17.1	-23.5
number of days with max. temperature < 0 °C	8	4	1	0	0	0	0	0	0	0	1	6	19
number of days with min. temperature < 0 °C	24	21	12	3	0	0	0	0	0	2	11	21	93
number of days with max. temperature > 25 °C	0	0	0	1	7	14	21	19	6	0	0	0	67
number of days with max. temperature > 30 °C	0	0	0	0	0	3	6	6	0	0	0	0	15
bright sunshine duration (in hours)*	80	112	147	172	230	240	284	253	186	126	71	60	1961
mean monthly relative humidity at 7 a.m. (%)	92	91	90	89	87	87	88	92	96	95	94	93	91
mean monthly relative humidity at 2 p.m. (%)	73	61	54	52	52	54	52	54	60	66	73	79	61
mean monthly relative humidity at 9 p.m. (%)	88	81	73	71	74	77	77	82	89	91	91	92	82
mean cloud amount at 7 a.m. (in tenths)	7.4	6.6	6.6	6.6	5.9	5.7	4.5	5.0	6.5	7.6	8.0	7.8	6.5
mean cloud amount at 2 p.m. (in tenths)	6.8	6.2	6.6	6.9	6.4	6.0	5.0	4.9	5.7	6.2	7.4	7.5	6.3
mean cloud amount at 9 p.m. (in tenths)	6.4	5.5	5.4	5.4	5.1	5.2	4.1	3.8	4.4	5.2	6.6	7.1	5.4
number of clear days (cloudiness < 2/10)	4	5	4	3	3	4	8	9	4	3	2	2	51
number of cloudy days (cloudiness > 8/10)	15	11	11	11	8	7	4	5	8	11	16	17	124
total amount of precipitation (mm)*	54	59	76	89	97	131	99	128	130	118	106	85	1171
number of days with precipitation 0.1 mm or more	11	10	11	14	14	14	11	11	13	14	14	14	151
number of days with precipitation 1 mm or more	7	7	8	10	10	11	9	9	9	9	10	9	106
number of days with precipitation 10 mm or more	2	2	3	3	3	4	3	4	4	4	4	3	40
number of days with snow cover at 7 a.m.	15	13	6	1	0	0	0	0	0	0	4	12	51
mean snow cover depth at 7 a.m. (cm)*	6	7	2	0	0	0	0	0	0	0	2	5	1.9
maximum snow cover depth at 7 a.m. (cm)	54	65	45	15	9	0	0	0	0	2	52	62	65
mean new snow cover depth (cm)*	25	32	13	4	0	0	0	0	0	0	16	25	115

* homogenised values

Time period: 1981–2010