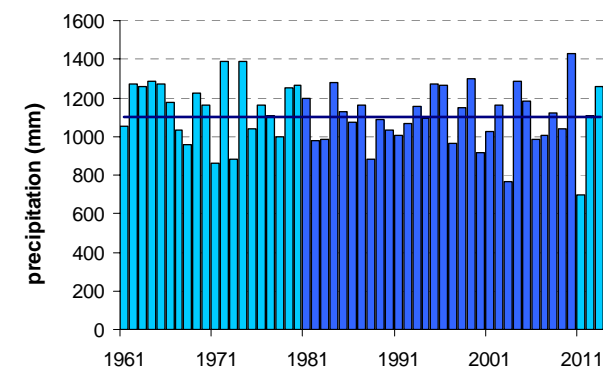
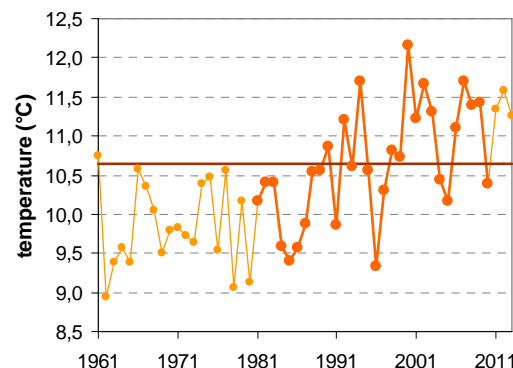


METLIKA

Latitude: 45° 39'

Longitude: 15° 20'

Elevation a. s. l.: 153 m



	JAN	FEB	MAR	APR	MAY	JUN	JUL	AUG	SEP	OCT	NOV	DEC	YEAR
mean monthly temperature (°C)*	0.1	1.9	6.3	10.8	15.8	18.9	20.8	20.2	15.6	10.9	5.3	1.0	10.7
mean daily maximum for a month (°C)*	4.3	7.5	12.5	17.3	22.6	25.6	28.1	27.8	22.8	17.0	10.0	4.8	16.7
mean daily minimum for a month (°C)*	—	—	—	—	—	—	—	—	—	—	—	—	—
absolute monthly maximum (°C)	19.5	23.2	27.2	30.0	33.6	37.5	37.8	40.5	33.6	29.5	24.8	20.5	40.5
absolute monthly minimum (°C)	-23.0	-24.0	-15.2	-4.5	-1.0	4.0	6.5	3.8	0.2	-7.0	-15.0	-18.6	-24.0
number of days with max. temperature < 0 °C	7	2	0	0	0	0	0	0	0	0	1	5	15
number of days with min. temperature < 0 °C	23	19	11	2	0	0	0	0	0	3	11	20	89
number of days with max. temperature > 25 °C	0	0	0	2	10	16	24	23	9	1	0	0	86
number of days with max. temperature > 30 °C	0	0	0	0	1	5	10	9	1	0	0	0	26
bright sunshine duration (in hours)*	—	—	—	—	—	—	—	—	—	—	—	—	—
mean monthly relative humidity at 7 a.m. (%)	88	88	86	87	87	88	89	90	92	92	91	90	89
mean monthly relative humidity at 2 p.m. (%)	72	60	54	52	52	55	52	52	56	63	71	78	60
mean monthly relative humidity at 9 p.m. (%)	83	77	70	70	73	76	75	78	84	87	87	87	79
mean cloud amount at 7 a.m. (in tenths)	7.2	5.9	6.0	5.9	5.0	4.8	3.8	4.1	5.2	6.7	7.3	7.7	5.8
mean cloud amount at 2 p.m. (in tenths)	6.5	5.6	5.7	6.0	5.5	5.1	4.4	4.3	5.0	5.8	6.7	7.0	5.6
mean cloud amount at 9 p.m. (in tenths)	6.3	5.2	5.0	5.0	4.3	4.4	3.5	3.4	4.3	5.0	6.3	6.7	5.0
number of clear days (cloudiness < 2/10)	4	6	5	4	6	6	9	9	6	5	3	3	64
number of cloudy days (cloudiness > 8/10)	14	9	9	8	6	5	3	3	6	9	13	15	99
total amount of precipitation (mm)*	60	57	71	82	89	114	98	109	119	110	104	87	1100
number of days with precipitation 0.1 mm or more	9	9	10	12	12	12	10	9	11	11	11	12	127
number of days with precipitation 1 mm or more	7	7	8	10	9	11	8	8	9	9	10	10	108
number of days with precipitation 10 mm or more	2	2	3	3	3	4	3	4	4	4	4	3	37
number of days with snow cover at 7 a.m.	13	9	4	0	0	0	0	0	0	0	3	10	40
mean snow cover depth at 7 a.m. (cm)*	6	5	2	0	0	0	0	0	0	0	2	4	1.5
maximum snow cover depth at 7 a.m. (cm)	55	78	40	20	7	0	0	0	0	0	55	60	78
mean new snow cover depth (cm)*	23	24	9	2	0	0	0	0	0	0	13	20	92

* homogenised values

Time period: 1981–2010