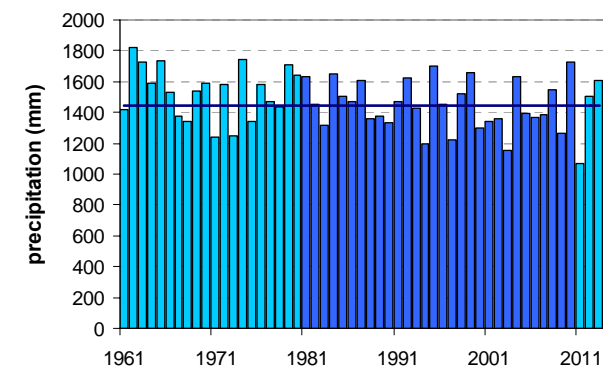
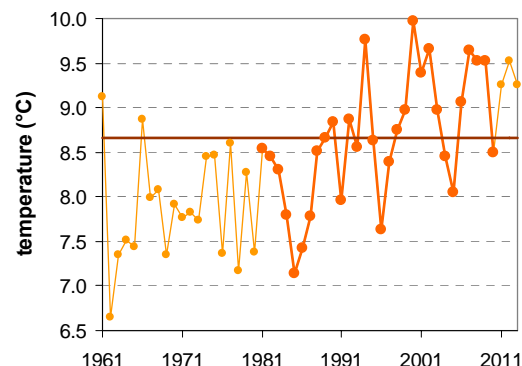


KOČEVJE

Latitude: 45° 39'

Longitude: 14° 51'

Elevation a. s. l.: 467 m



	JAN	FEB	MAR	APR	MAY	JUN	JUL	AUG	SEP	OCT	NOV	DEC	YEAR
mean monthly temperature (°C)*	-1.1	0.0	3.8	8.3	13.3	16.5	18.4	17.7	13.5	9.4	4.2	0.0	8.7
mean daily maximum for a month (°C)*	3.6	6.0	10.3	14.8	20.2	23.4	26.1	25.6	20.8	15.4	8.9	3.9	14.9
mean daily minimum for a month (°C)*	-5.3	-4.9	-1.2	2.8	7.3	10.5	12.1	11.9	8.5	5.0	0.3	-3.5	3.6
absolute monthly maximum (°C)	18.4	20.7	24.5	26.2	31.9	33.9	35.9	36.9	31.0	27.1	22.0	16.0	36.9
absolute monthly minimum (°C)	-27.6	-27.4	-23.6	-10.5	-2.6	1.0	4.4	3.2	-0.8	-6.7	-18.0	-19.2	-27.6
number of days with max. temperature < 0 °C	8	4	1	0	0	0	0	0	0	0	1	6	21
number of days with min. temperature < 0 °C	26	24	19	6	0	0	0	0	0	4	14	23	117
number of days with max. temperature > 25 °C	0	0	0	0	4	11	19	18	4	0	0	0	57
number of days with max. temperature > 30 °C	0	0	0	0	0	2	5	4	0	0	0	0	12
bright sunshine duration (in hours)*	—	—	—	—	—	—	—	—	—	—	—	—	—
mean monthly relative humidity at 7 a.m. (%)	90	90	90	91	89	89	90	93	94	93	91	90	91
mean monthly relative humidity at 2 p.m. (%)	70	58	53	51	50	51	48	48	54	60	69	76	57
mean monthly relative humidity at 9 p.m. (%)	87	84	80	77	77	78	79	82	88	89	89	89	83
mean cloud amount at 7 a.m. (in tenths)	7.5	7.0	7.0	6.9	6.1	6.0	5.2	6.0	7.7	8.4	8.4	7.9	7.0
mean cloud amount at 2 p.m. (in tenths)	6.4	6.1	6.7	7.1	6.6	6.2	5.5	5.5	5.9	6.3	7.0	7.2	6.4
mean cloud amount at 9 p.m. (in tenths)	6.6	5.7	5.8	5.8	5.3	5.1	4.0	3.9	4.8	5.7	6.9	7.3	5.6
number of clear days (cloudiness < 2/10)	3	4	3	3	3	4	6	6	2	2	2	3	41
number of cloudy days (cloudiness > 8/10)	15	11	13	11	9	8	5	6	9	13	16	17	132
total amount of precipitation (mm)*	80	84	102	115	115	140	104	132	151	155	144	127	1448
number of days with precipitation 0.1 mm or more	12	11	12	15	15	15	12	12	13	14	14	15	159
number of days with precipitation 1 mm or more	9	7	9	11	11	12	9	9	10	11	11	11	119
number of days with precipitation 10 mm or more	3	3	4	4	4	5	4	4	5	5	5	4	49
number of days with snow cover at 7 a.m.	18	15	10	1	0	0	0	0	0	0	4	14	63
mean snow cover depth at 7 a.m. (cm)*	10	13	6	0	0	0	0	0	0	0	2	6	3.2
maximum snow cover depth at 7 a.m. (cm)	77	97	74	33	3	0	0	0	0	7	65	56	97
mean new snow cover depth (cm)*	38	50	24	7	0	0	0	0	0	0	21	36	175

* homogenised values

Time period: 1981–2010