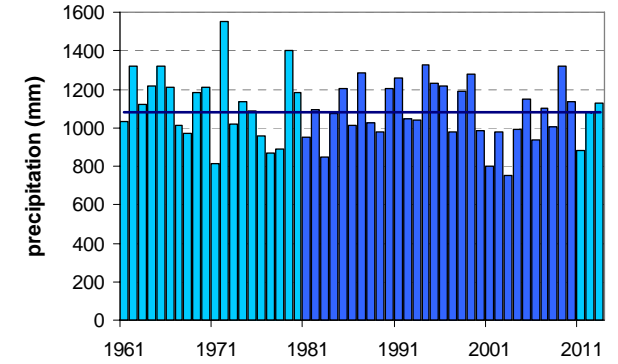
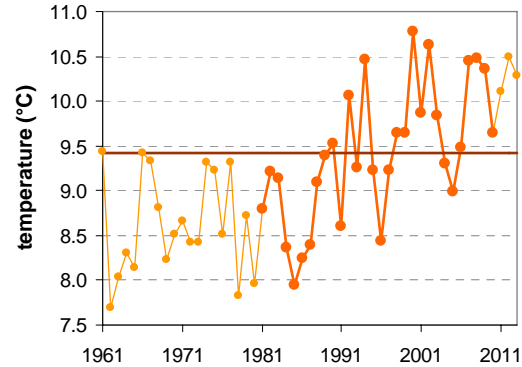
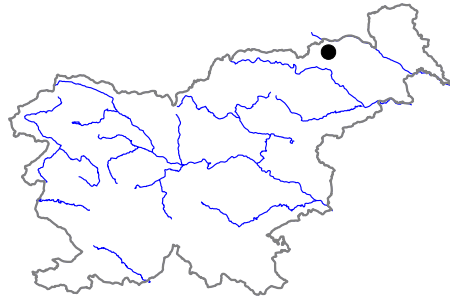


JARENINSKI VRH

Latitude: 46° 38'

Longitude: 15° 42'

Elevation: 279 m a. s. l.



	JAN	FEB	MAR	APR	MAY	JUN	JUL	AUG	SEP	OCT	NOV	DEC	YEAR
mean monthly temperature (°C)*	-1.4	0.4	4.9	9.9	14.9	17.9	19.7	18.8	14.5	9.7	4.1	-0.3	9.4
mean daily maximum for a month (°C)*	3.3	6.4	11.2	16.0	20.7	23.3	25.5	24.9	20.5	15.4	8.8	3.7	15.0
mean daily minimum for a month (°C)*	-5.2	-4.1	-0.1	4.1	8.9	12.3	14.0	13.7	9.9	5.6	0.5	-3.5	4.7
absolute monthly maximum (°C)	18.0	23.4	24.6	28.0	32.0	34.0	36.5	36.8	29.9	26.6	22.5	20.4	36.8
absolute monthly minimum (°C)	-26.2	-23.3	-20.1	-9.0	-2.0	2.3	4.5	3.5	-0.2	-7.0	-18.5	-22.0	-26.2
number of days with max. temperature < 0 °C	8	3	0	0	0	0	0	0	0	0	1	6	19
number of days with min. temperature < 0 °C	27	23	15	4	0	0	0	0	0	3	13	24	110
number of days with max. temperature > 25 °C	0	0	0	1	6	12	19	16	4	0	0	0	57
number of days with max. temperature > 30 °C	0	0	0	0	0	2	3	4	0	0	0	0	9
bright sunshine duration (in hours)*	—	—	—	—	—	—	—	—	—	—	—	—	—
mean monthly relative humidity at 7 a.m. (%)	91	90	90	89	87	87	88	93	94	94	93	92	91
mean monthly relative humidity at 2 p.m. (%)	70	58	53	50	51	54	52	53	58	64	70	76	59
mean monthly relative humidity at 9 p.m. (%)	87	82	76	72	76	78	80	84	88	90	89	89	83
mean cloud amount at 7 a.m. (in tenths)	7.0	6.3	6.6	6.2	5.6	5.7	5.0	5.1	5.7	6.6	7.2	7.4	6.2
mean cloud amount at 2 p.m. (in tenths)	6.6	5.9	6.7	6.6	6.3	6.1	5.3	5.3	5.7	6.1	6.9	7.1	6.2
mean cloud amount at 9 p.m. (in tenths)	6.2	5.5	5.5	5.4	5.1	5.4	4.7	4.4	4.7	5.4	6.6	6.7	5.5
number of clear days (cloudiness < 2/10)	4	5	4	4	4	4	6	7	6	5	3	3	55
number of cloudy days (cloudiness > 8/10)	14	10	11	10	8	7	6	6	8	11	14	15	122
total amount of precipitation (mm)*	41	44	64	71	100	134	117	139	122	90	85	73	1080
number of days with precipitation 0.1 mm or more	8	8	10	13	14	14	12	12	11	10	11	11	132
number of days with precipitation 1 mm or more	5	5	7	9	10	11	9	9	8	7	8	8	96
number of days with precipitation 10 mm or more	1	1	2	2	3	4	4	4	4	3	3	2	32
number of days with snow cover at 7 a.m.	15	13	6	1	0	0	0	0	0	0	3	11	49
mean snow cover depth at 7 a.m. (cm)*	7	8	3	0	0	0	0	0	0	0	1	4	1.9
maximum snow cover depth at 7 a.m. (cm)	55	65	57	15	4	0	0	0	0	6	41	55	65
mean new snow cover depth (cm)*	21	25	12	2	0	0	0	0	0	0	11	23	94

* homogenised values

Time period: 1981–2010