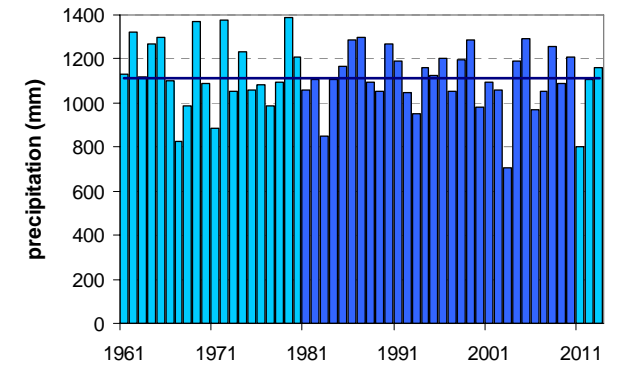
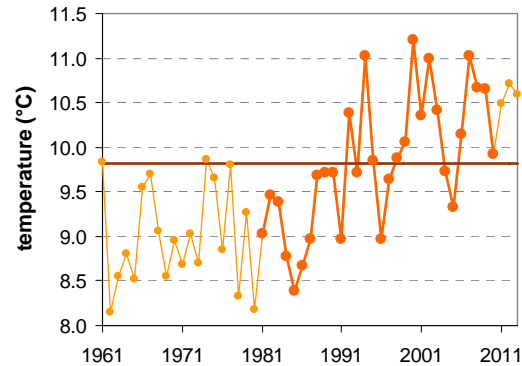
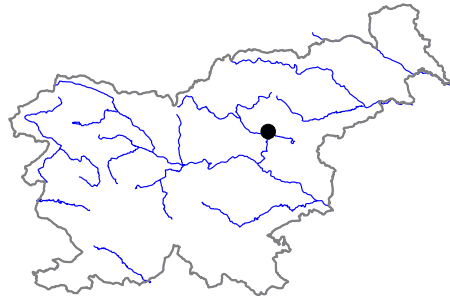


CELJE

Latitude: 46° 14'

Longitude: 15° 14'

Elevation: 241 m a. s. l.



	JAN	FEB	MAR	APR	MAY	JUN	JUL	AUG	SEP	OCT	NOV	DEC	YEAR
mean monthly temperature (°C)*	-0.3	1.0	5.2	9.8	14.9	18.3	19.9	19.0	14.6	10.1	4.7	0.6	9.8
mean daily maximum for a month (°C)*	4.1	6.8	11.6	16.4	21.6	24.6	26.9	26.5	21.7	16.3	9.6	4.5	15.9
mean daily minimum for a month (°C)*	-4.6	-4.2	-0.2	3.9	8.6	12.3	13.8	13.4	9.7	5.9	0.9	-3.0	4.7
absolute monthly maximum (°C)	17.4	20.6	25.7	28.4	32.4	35.2	36.8	38.1	30.4	26.7	22.0	20.2	38.1
absolute monthly minimum (°C)	-27.2	-27.0	-20.8	-6.5	-1.9	2.9	5.4	3.4	-0.8	-8.5	-19.4	-21.0	-27.2
number of days with max. temperature < 0 °C	7	3	0	0	0	0	0	0	0	0	1	5	16
number of days with min. temperature < 0 °C	25	22	15	5	0	0	0	0	0	3	13	22	106
number of days with max. temperature > 25 °C	0	0	0	1	7	14	22	20	6	0	0	0	70
number of days with max. temperature > 30 °C	0	0	0	0	1	4	7	6	0	0	0	0	17
bright sunshine duration (in hours)*	—	—	—	—	—	—	—	—	—	—	—	—	—
mean monthly relative humidity at 7 a.m. (%)	89	88	88	87	84	82	85	89	92	93	91	90	88
mean monthly relative humidity at 2 p.m. (%)	67	55	50	48	48	49	48	48	54	60	67	73	56
mean monthly relative humidity at 9 p.m. (%)	85	80	74	72	74	76	78	82	88	89	88	88	81
mean cloud amount at 7 a.m. (in tenths)	7.3	6.8	6.9	6.5	5.9	5.8	4.9	5.1	6.6	7.6	7.6	7.8	6.6
mean cloud amount at 2 p.m. (in tenths)	6.5	6.1	6.8	7.0	6.6	6.3	5.5	5.3	5.9	6.2	6.9	7.2	6.4
mean cloud amount at 9 p.m. (in tenths)	6.3	5.7	6.0	5.8	5.5	5.7	4.8	4.5	4.9	5.5	6.5	7.0	5.7
number of clear days (cloudiness < 2/10)	3	4	3	3	3	2	5	6	4	2	2	2	39
number of cloudy days (cloudiness > 8/10)	14	11	12	10	8	7	4	6	8	11	14	16	120
total amount of precipitation (mm)*	47	50	71	71	90	132	122	125	118	115	93	78	1113
number of days with precipitation 0.1 mm or more	10	8	11	13	14	14	12	12	11	11	12	12	140
number of days with precipitation 1 mm or more	6	6	7	9	10	11	9	9	9	8	8	8	102
number of days with precipitation 10 mm or more	1	2	2	2	3	5	4	4	4	4	3	3	37
number of days with snow cover at 7 a.m.	13	12	5	0	0	0	0	0	0	0	3	10	43
mean snow cover depth at 7 a.m. (cm)*	5	6	2	0	0	0	0	0	0	0	1	3	1.5
maximum snow cover depth at 7 a.m. (cm)	45	68	42	11	12	0	0	0	0	3	32	54	68
mean new snow cover depth (cm)*	17	23	10	1	0	0	0	0	0	0	9	21	82

* homogenised values

Time period: 1981–2010