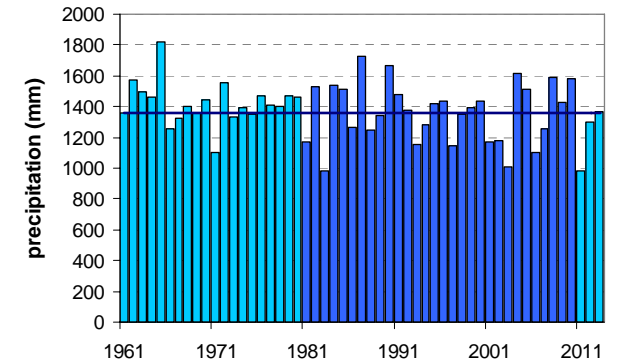
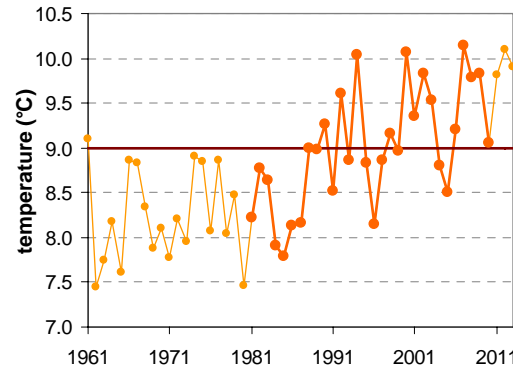
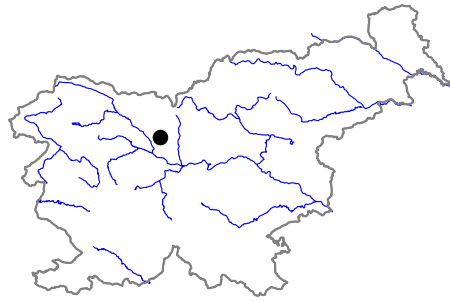


LJUBLJANA JP AIRPORT

Latitude: 46° 13'

Longitude: 14° 29'

Elevation: 364 m a. s. l.



	JAN	FEB	MAR	APR	MAY	JUN	JUL	AUG	SEP	OCT	NOV	DEC	YEAR
mean monthly temperature (°C)*	-1.7	-0.2	4.1	8.8	14.1	17.4	19.4	18.7	14.2	9.6	4.0	-0.4	9.0
mean daily maximum for a month (°C)*	2.5	5.5	10.4	15.1	20.4	23.4	26.0	25.6	20.6	15.2	8.2	3.1	14.7
mean daily minimum for a month (°C)*	-5.4	-4.9	-1.1	2.9	7.6	11.3	13.0	12.8	9.2	5.4	0.5	-3.5	4.0
absolute monthly maximum (°C)	15.1	20.1	24.6	27.0	32.6	34.0	36.3	36.7	29.8	25.3	20.3	15.8	36.7
absolute monthly minimum (°C)	-24.6	-20.5	-20.9	-6.1	-1.6	-0.1	4.1	2.8	-1.6	-9.1	-15.8	-20.3	-24.6
number of days with max. temperature < 0 °C	8	3	0	0	0	0	0	0	0	0	1	7	20
number of days with min. temperature < 0 °C	26	24	17	5	0	0	0	0	0	3	14	23	112
number of days with max. temperature > 25 °C	0	0	0	0	6	12	21	18	4	0	0	0	62
number of days with max. temperature > 30 °C	0	0	0	0	0	2	5	5	0	0	0	0	13
bright sunshine duration (in hours)*	78	116	139	163	215	225	265	249	175	122	69	59	1874
mean monthly relative humidity at 7 a.m. (%)	92	91	90	89	85	85	85	89	94	95	94	93	90
mean monthly relative humidity at 2 p.m. (%)	76	64	57	54	52	54	52	53	60	67	76	81	62
mean monthly relative humidity at 9 p.m. (%)	89	84	80	78	78	80	80	83	89	91	91	92	85
mean cloud amount at 7 a.m. (in tenths)	7.4	6.4	6.6	6.5	6.0	5.9	4.7	4.9	6.3	7.4	7.6	7.7	6.5
mean cloud amount at 2 p.m. (in tenths)	6.7	5.9	6.5	6.8	6.5	6.1	5.3	5.1	5.6	6.2	7.2	7.4	6.3
mean cloud amount at 9 p.m. (in tenths)	6.5	5.6	6.2	6.2	5.9	5.8	4.9	4.8	5.4	6.2	7.0	7.3	6.0
number of clear days (cloudiness < 2/10)	3	5	3	3	2	2	5	6	3	2	2	3	38
number of cloudy days (cloudiness > 8/10)	15	10	12	11	9	7	4	5	8	12	16	18	125
total amount of precipitation (mm)*	66	65	90	95	107	145	122	135	140	137	145	116	1363
number of days with precipitation 0.1 mm or more	10	8	11	13	14	15	12	12	11	12	13	12	143
number of days with precipitation 1 mm or more	7	6	8	10	10	11	9	9	9	9	9	9	108
number of days with precipitation 10 mm or more	2	2	3	3	3	5	4	4	4	5	4	4	43
number of days with snow cover at 7 a.m.	16	14	8	1	0	0	0	0	0	0	3	12	54
mean snow cover depth at 7 a.m. (cm)*	9	10	4	0	0	0	0	0	0	0	1	4	2.3
maximum snow cover depth at 7 a.m. (cm)	90	63	63	25	7	0	0	0	0	5	35	51	90
mean new snow cover depth (cm)*	23	26	10	3	0	0	0	0	0	0	10	20	92

* homogenised values

Time period: 1981–2010