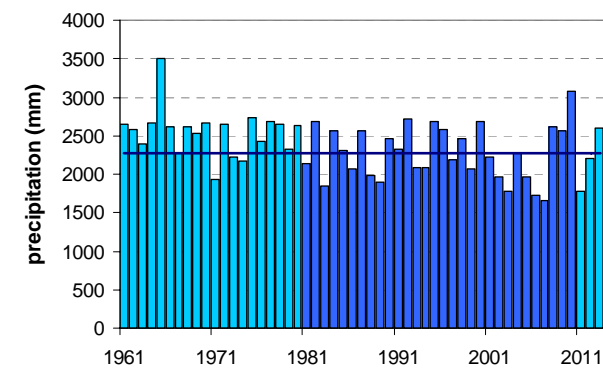
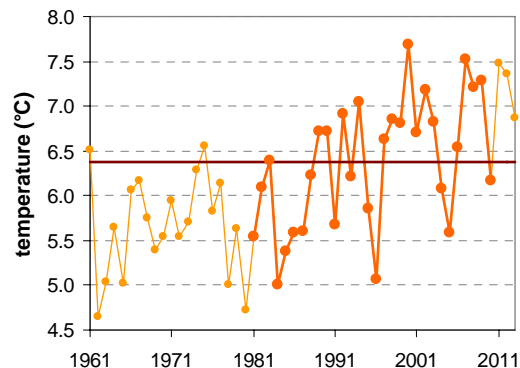
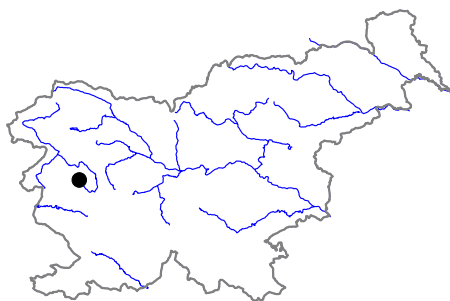


VOJSKO (NAD IDRIJO)

Latitude: 46° 2'

Longitude: 13° 54'

Elevation a. s. l.: 1067 m



	JAN	FEB	MAR	APR	MAY	JUN	JUL	AUG	SEP	OCT	NOV	DEC	YEAR
mean monthly temperature (°C)*	-2.6	-2.1	1.3	5.3	10.6	13.7	16.0	15.5	11.2	7.0	1.9	-1.5	6.4
mean daily maximum for a month (°C)*	0.3	1.5	5.2	9.5	15.0	18.4	21.1	20.5	15.6	10.6	4.9	1.3	10.3
mean daily minimum for a month (°C)*	-5.3	-5.0	-1.9	1.9	6.7	9.6	11.7	11.5	8.0	4.2	-0.5	-4.1	3.1
absolute monthly maximum (°C)	13.4	16.7	19.7	21.2	27.5	28.6	30.5	29.5	27.5	21.3	17.1	17.1	30.5
absolute monthly minimum (°C)	-20.5	-18.7	-17.0	-9.5	-2.0	1.1	4.0	1.4	-1.1	-8.2	-14.5	-18.4	-20.5
number of days with max. temperature < 0 °C	13	10	4	0	0	0	0	0	0	0	4	11	42
number of days with min. temperature < 0 °C	26	24	19	8	0	0	0	0	0	4	15	25	122
number of days with max. temperature > 25 °C	0	0	0	0	0	1	4	3	0	0	0	0	8
number of days with max. temperature > 30 °C	0	0	0	0	0	0	0	0	0	0	0	0	0
bright sunshine duration (in hours)*	—	—	—	—	—	—	—	—	—	—	—	—	—
mean monthly relative humidity at 7 a.m. (%)	—	—	—	—	—	—	—	—	—	—	—	—	—
mean monthly relative humidity at 2 p.m. (%)	—	—	—	—	—	—	—	—	—	—	—	—	—
mean monthly relative humidity at 9 p.m. (%)	—	—	—	—	—	—	—	—	—	—	—	—	—
mean cloud amount at 7 a.m. (in tenths)	6.3	5.9	6.4	6.3	5.6	5.4	4.2	4.6	5.9	6.8	6.9	6.6	5.9
mean cloud amount at 2 p.m. (in tenths)	6.3	5.9	6.5	7.1	6.5	6.4	5.3	5.3	5.9	6.5	6.9	6.8	6.3
mean cloud amount at 9 p.m. (in tenths)	6.2	5.9	6.4	6.5	6.1	6.0	5.1	5.2	5.6	6.7	7.0	6.7	6.1
number of clear days (cloudiness < 2/10)	6	5	4	3	3	2	5	6	4	3	3	4	48
number of cloudy days (cloudiness > 8/10)	13	11	13	13	10	8	5	6	9	14	14	14	129
total amount of precipitation (mm)*	147	126	167	174	171	176	143	160	215	244	301	252	2275
number of days with precipitation 0.1 mm or more	11	10	12	15	15	16	13	13	12	14	14	13	157
number of days with precipitation 1 mm or more	9	8	9	12	12	13	10	10	10	11	11	11	126
number of days with precipitation 10 mm or more	4	4	5	6	5	5	4	5	5	6	6	6	62
number of days with snow cover at 7 a.m.	25	23	23	12	1	0	0	0	0	1	8	22	114
mean snow cover depth at 7 a.m. (cm)*	37	50	52	16	0	0	0	0	0	0	5	20	15.0
maximum snow cover depth at 7 a.m. (cm)	185	215	210	185	65	0	0	0	0	30	85	132	215
mean new snow cover depth (cm)*	55	66	60	33	5	0	0	0	0	3	30	62	314

* homogenised values

Time period: 1981–2010