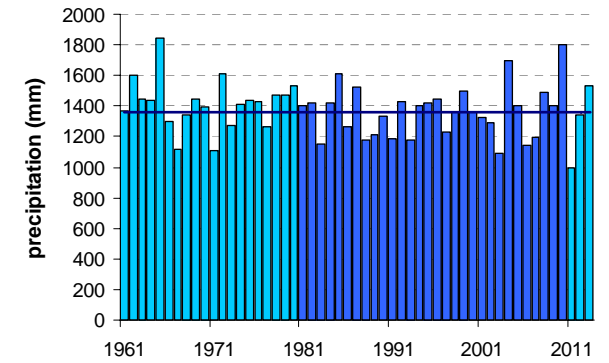
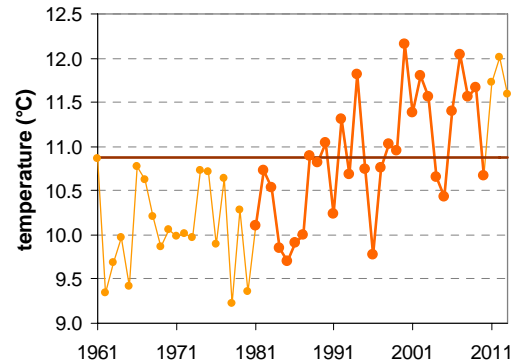
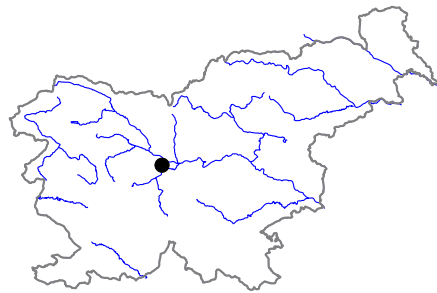


# LJUBLJANA BEŽIGRAD

Latitude: 46° 4'

Longitude: 14° 31'

Elevation a. s. l.: 299 m



	JAN	FEB	MAR	APR	MAY	JUN	JUL	AUG	SEP	OCT	NOV	DEC	YEAR
mean monthly temperature (°C)*	0.3	1.9	6.5	10.8	15.8	19.1	21.3	20.6	16.0	11.2	5.6	1.2	10.9
mean daily maximum for a month (°C)*	3.4	6.4	11.4	16.1	21.4	24.6	27.3	26.7	21.6	15.9	8.8	3.8	15.6
mean daily minimum for a month (°C)*	-2.5	-2.0	1.7	5.8	10.3	13.7	15.5	15.2	11.5	7.7	2.8	-1.1	6.6
absolute monthly maximum (°C)	15.8	19.7	24.3	27.8	32.4	35.6	37.1	37.3	30.3	25.8	20.9	16.7	37.3
absolute monthly minimum (°C)	-20.3	-18.0	-14.1	-3.2	0.2	3.8	7.4	5.8	3.1	-5.2	-14.5	-14.5	-20.3
number of days with max. temperature < 0 °C	8	3	0	0	0	0	0	0	0	0	1	6	18
number of days with min. temperature < 0 °C	23	19	10	1	0	0	0	0	0	1	9	20	83
number of days with max. temperature > 25 °C	0	0	0	0	8	15	23	21	6	0	0	0	73
number of days with max. temperature > 30 °C	0	0	0	0	0	4	8	7	0	0	0	0	19
bright sunshine duration (in hours)*	71	114	149	178	235	246	293	264	183	120	66	56	1974
mean monthly relative humidity at 7 a.m. (%)	90	89	88	87	85	84	84	90	94	93	92	91	89
mean monthly relative humidity at 2 p.m. (%)	74	62	55	51	50	52	48	50	57	65	73	79	60
mean monthly relative humidity at 9 p.m. (%)	84	77	69	68	69	70	69	75	84	87	87	87	77
mean cloud amount at 7 a.m. (in tenths)	8.2	7.1	7.0	6.8	6.1	6.0	5.0	5.7	7.8	8.6	8.6	8.5	7.1
mean cloud amount at 2 p.m. (in tenths)	6.9	5.8	6.3	6.6	6.2	5.8	5.0	4.9	5.5	6.1	7.2	7.4	6.2
mean cloud amount at 9 p.m. (in tenths)	6.8	5.6	5.8	5.7	5.4	5.5	4.5	4.0	4.8	5.8	7.0	7.5	5.7
number of clear days (cloudiness < 2/10)	2	4	4	3	3	3	5	6	2	1	1	2	37
number of cloudy days (cloudiness > 8/10)	16	11	12	11	8	7	4	5	8	13	17	19	130
total amount of precipitation (mm)*	69	70	88	99	109	144	115	137	147	147	129	107	1362
number of days with precipitation 0.1 mm or more	11	9	11	14	14	15	12	12	12	13	14	14	153
number of days with precipitation 1 mm or more	8	7	8	10	10	11	9	9	9	10	10	9	110
number of days with precipitation 10 mm or more	2	2	3	3	3	5	4	4	4	5	5	4	44
number of days with snow cover at 7 a.m.	15	14	6	1	0	0	0	0	0	0	3	11	50
mean snow cover depth at 7 a.m. (cm)*	7	8	2	0	0	0	0	0	0	0	1	3	1.8
maximum snow cover depth at 7 a.m. (cm)	89	67	41	14	8	0	0	0	0	4	37	40	89
mean new snow cover depth (cm)*	24	25	8	2	0	0	0	0	0	0	10	17	86

\* homogenised values

Time period: 1981–2010